



FAMU WAY Playground
Restroom

Project Highlights

- The new restroom facility will feature two family restroom stalls near the existing playground and Railroad Square, on the north side of FAMU Way.
- Innovative stormwater treatment facilities are part of the project through the implementation of a green roof and cistern system that will treat the stormwater at the facility and use the runoff stormwater to irrigate the green roof system.
- This public restroom will serve the existing FAMU Way playground constructed by Blueprint in 2016 and the Skateable Art and Coal Chute Pond amenities that are in construction in the immediate area.

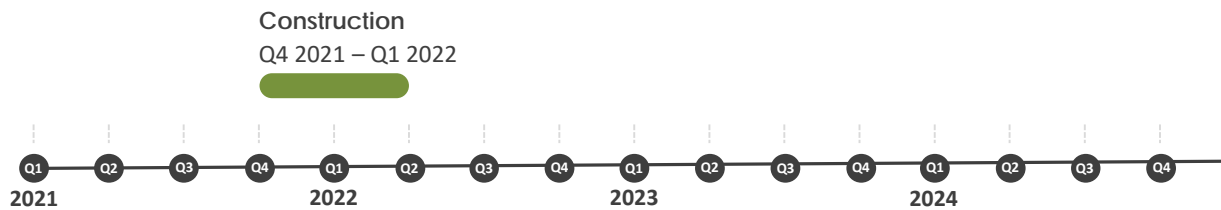
Current Status

- An Invitation for Bids for the construction was released earlier this year.
- A contract was executed with Oliver/Sperry and the tentative start date for construction is November 16, 2021.

Next Steps

- Initiate construction of the new 2-stall family style restroom facility at the FAMU Way Playground.

Timeline

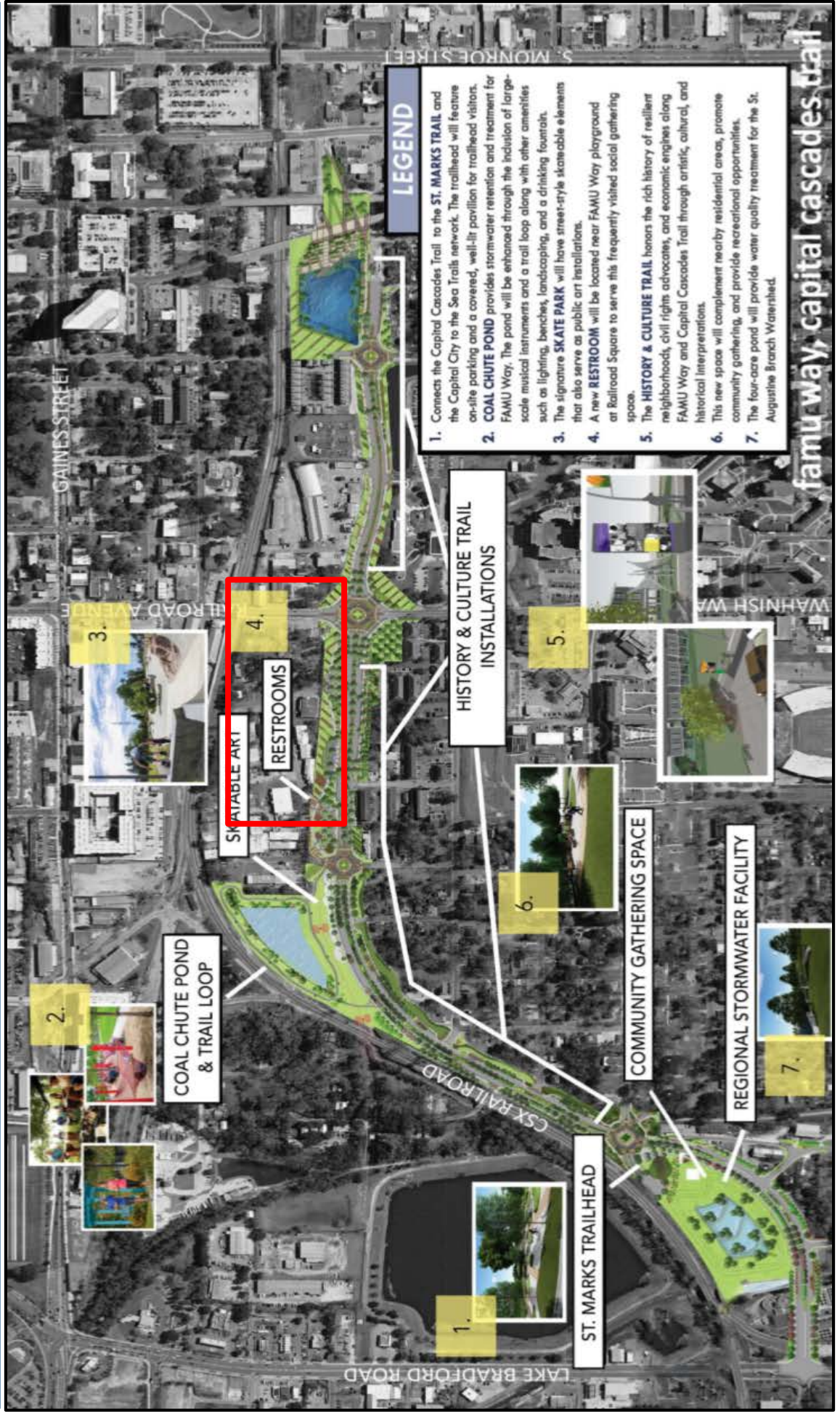


Community Engagement: Public engagement is ongoing through all phases of a project, from concept to construction, programming, and maintenance. Public engagement is two-way communication inclusive of all decision-makers and stakeholders. Each Blueprint project will have a customized Public Engagement Plan that is developed at the start of the project, and outreach activities and techniques will vary from project to project, as each project's outcome and stakeholder community character is unique.

Construction: Construction work will fully implement the final design plans for FAMU Way Playground Restroom.

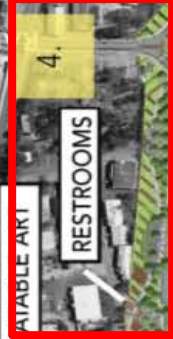
BLUEPRINT

INTERGOVERNMENTAL AGENCY

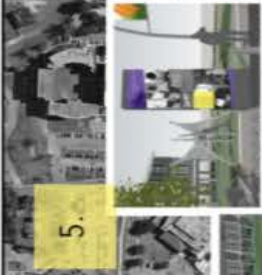


LEGEND

1. Connects the Capital Cascades Trail to the ST. MARKS TRAIL and the Capital City to the Sea Trails network. The trailhead will feature on-site parking and a covered, well-lit pavilion for trailhead visitors.
2. COAL CHUTE POND provides stormwater retention and treatment for FAMU Way. The pond will be enhanced through the inclusion of large-scale musical instruments and a trail loop along with other amenities such as lighting, benches, landscaping, and a drinking fountain.
3. The signature SKATEABLE ART will have street-style skateable elements that also serve as public art installations.
4. A new RESTROOM will be located near FAMU Way playground at Railroad Square to serve this frequently visited social gathering space.
5. THE HISTORY & CULTURE TRAIL honors the rich history of resilient neighborhoods, civil rights advocates, and economic engines along FAMU Way and Capital Cascades Trail through artistic, cultural, and historical interpretations.
6. This new space will complement nearby residential areas, promote community gathering, and provide recreational opportunities.
7. The four-acre pond will provide water quality treatment for the St. Augustine Branch Watershed.



HISTORY & CULTURE TRAIL INSTALLATIONS



COMMUNITY GATHERING SPACE



REGIONAL STORMWATER FACILITY

famu way capital cascades trail