



*Capital Cascades Trail Segment 3  
Coal Chute Pond*

## Project Highlights

- The stormwater facility will be enhanced through the inclusion of trail and park like amenities such as lighting, benches, and landscaping.
- Amenities were refined through a public involvement process conducted in Spring 2019, with FAMU, FSU, surrounding neighborhoods and businesses, and 300 citizens submitting their amenities preferences.
- Design incorporates the KCCI Red Hills Rhythm Project, which includes musical instruments designed for play.

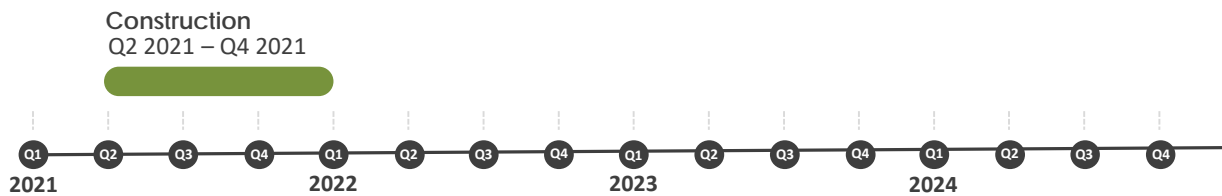
## Current Status

- Construction for Coal Chute Pond is underway with a completion date anticipated in November 2021.
- Posts for the KCCI Red Hills Rhythm Project are being installed, with the instruments to be installed closer to the grand opening.

## Next Steps

- Continued construction until November 2021.

## Timeline



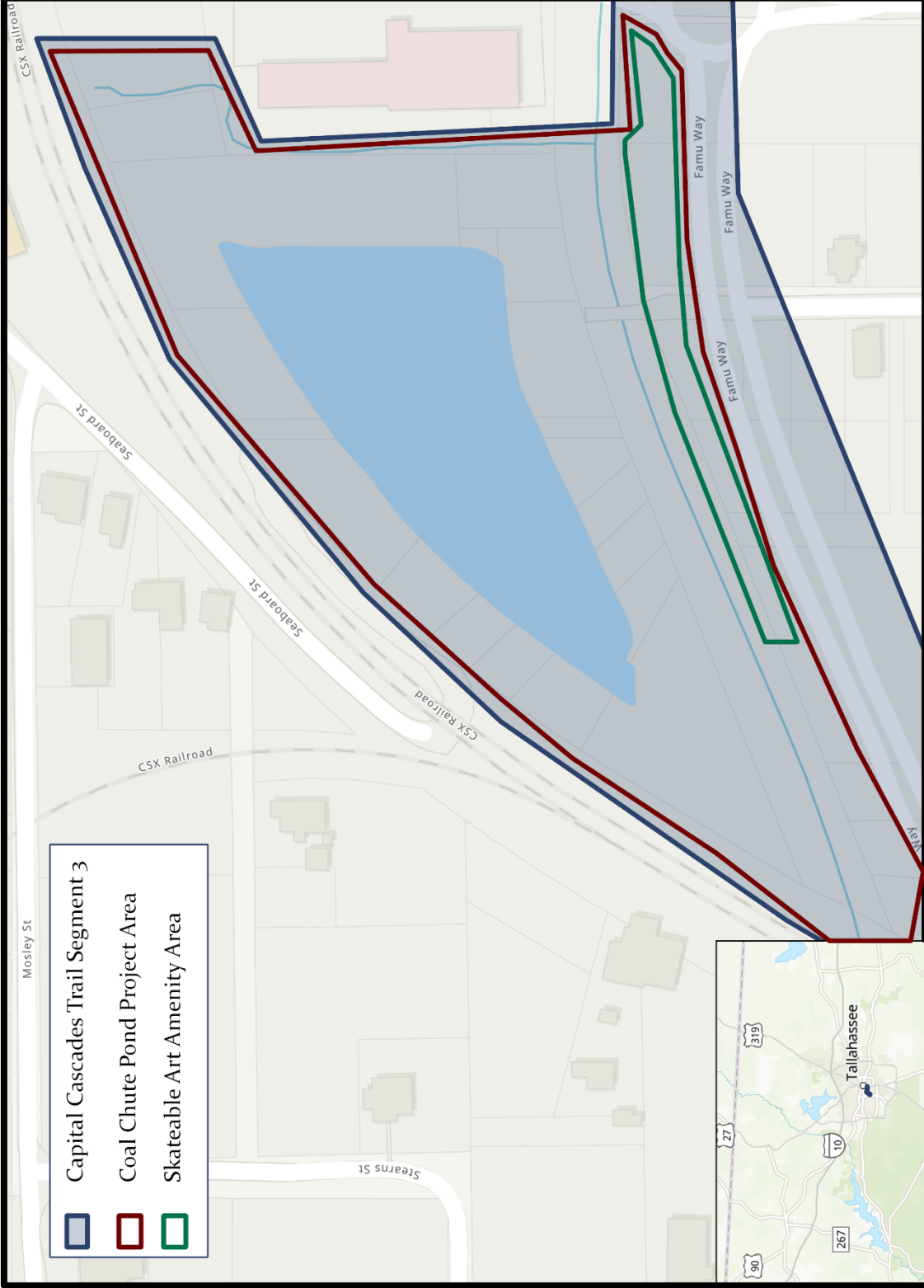
---

**Community Engagement:** Public engagement is ongoing through all phases of a project, from concept to construction, programming, and maintenance. Public engagement is two-way communication inclusive of all decision-makers and stakeholders. Each Blueprint project will have a customized Public Engagement Plan that is developed at the start of the project, and outreach activities and techniques will vary from project to project, as each project's outcome and stakeholder community character is unique.

**Construction:** Construction work will fully implement the final design plans for Coal Chute Pond.

# BLUEPRINT

INTERGOVERNMENTAL AGENCY



-  Capital Cascades Trail Segment 3
-  Coal Chute Pond Project Area
-  Skateable Art Amenity Area

Capital Cascades Trail Segment 3  
Map of Coal Chute Pond and Skateable Art Project Area