



Westside Student Gateway

Project Highlights

- Widens Pensacola Street/Highway 20 (from Capital Circle to Appleyard) to four lanes and adds landscaped medians
- Includes funding for stormwater improvements in the Gum Creek/West Drainage Ditch
- Will create gateway features and network connectivity

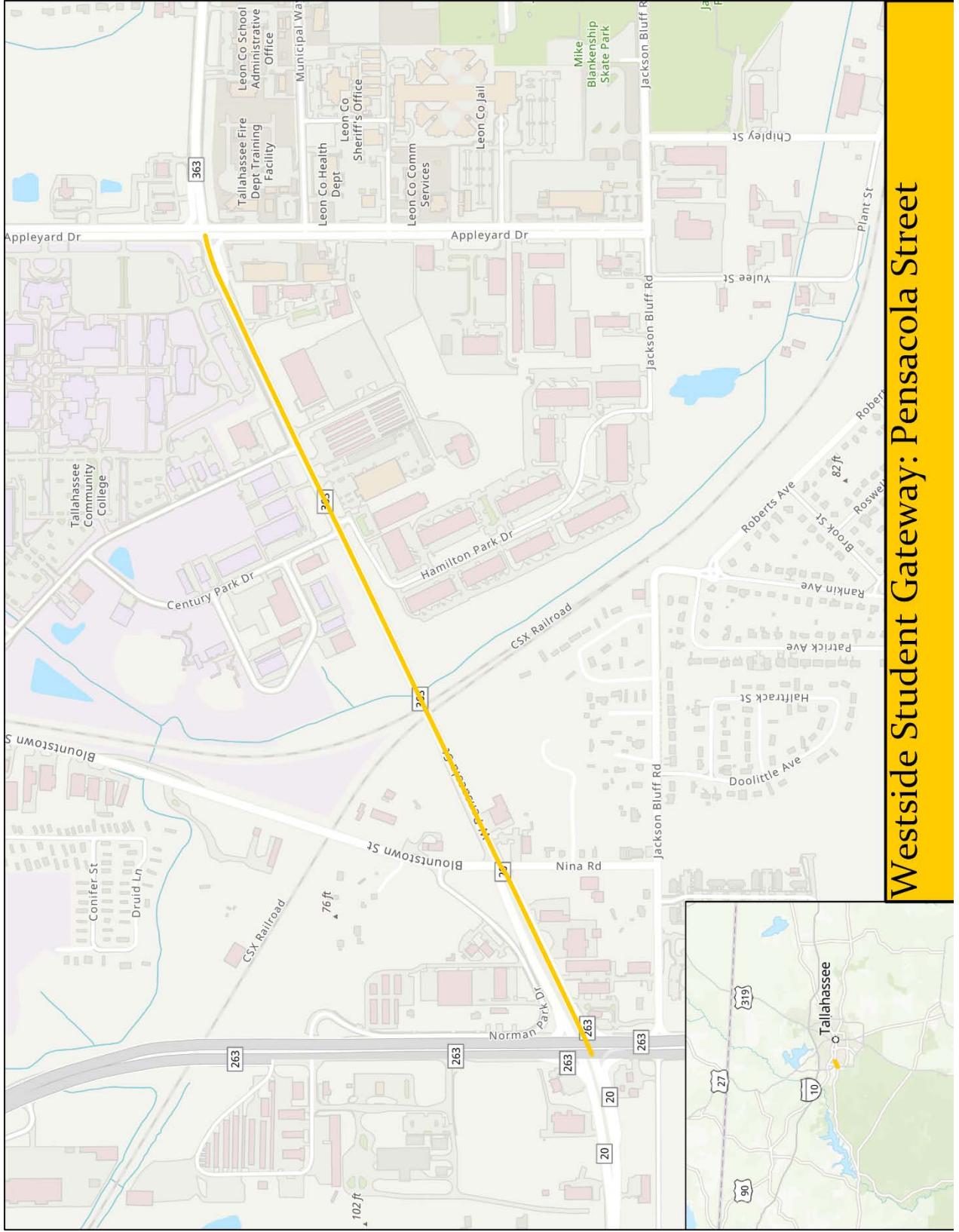
Current Status:

- Funding for PD&E for this project is currently 8th on the CRTPA Road Project Priority List for 2021-2025. No funding has been identified/allocated yet.
- Blueprint has not yet initiated this project.

BLUEPRINT



INTERGOVERNMENTAL AGENCY



Westside Student Gateway: Pensacola Street