

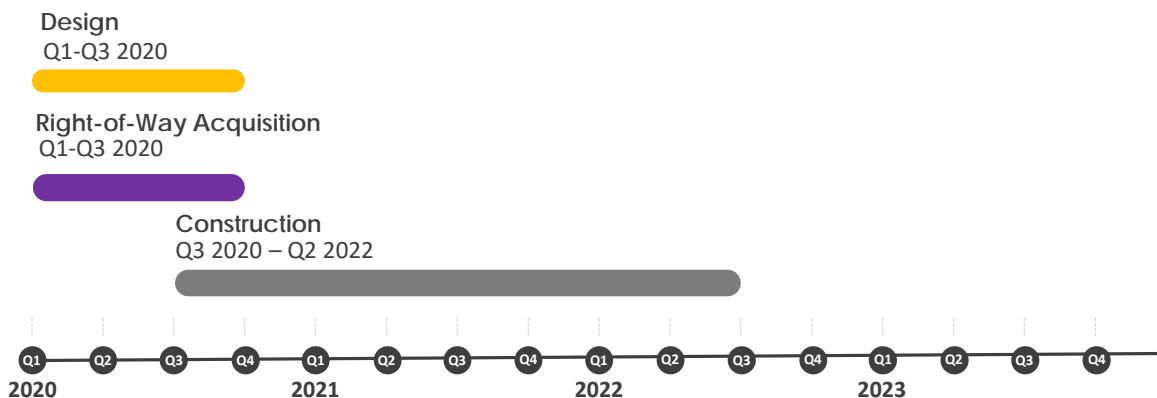
Magnolia Drive Multiuse Trail

## Project Highlights

- The project will construct a new shared-use trail from S. Adams to Apalachee Parkway to provide connectivity and improve safety, as well as underground electric utilities from Chowkeebin Nene to S. Monroe Street.
- Trail construction completed from Monroe Street to Adams Street (Phase 6) and Pontiac Drive to Meridian Street (Phase 1).
  - Pontiac Drive to Meridian Street will be further improved by undergrounding electric utilities and retrofitting the shared-use trail to add a landscaped buffer.
- A map of project phasing can be seen on the reverse side.

### Current Status:

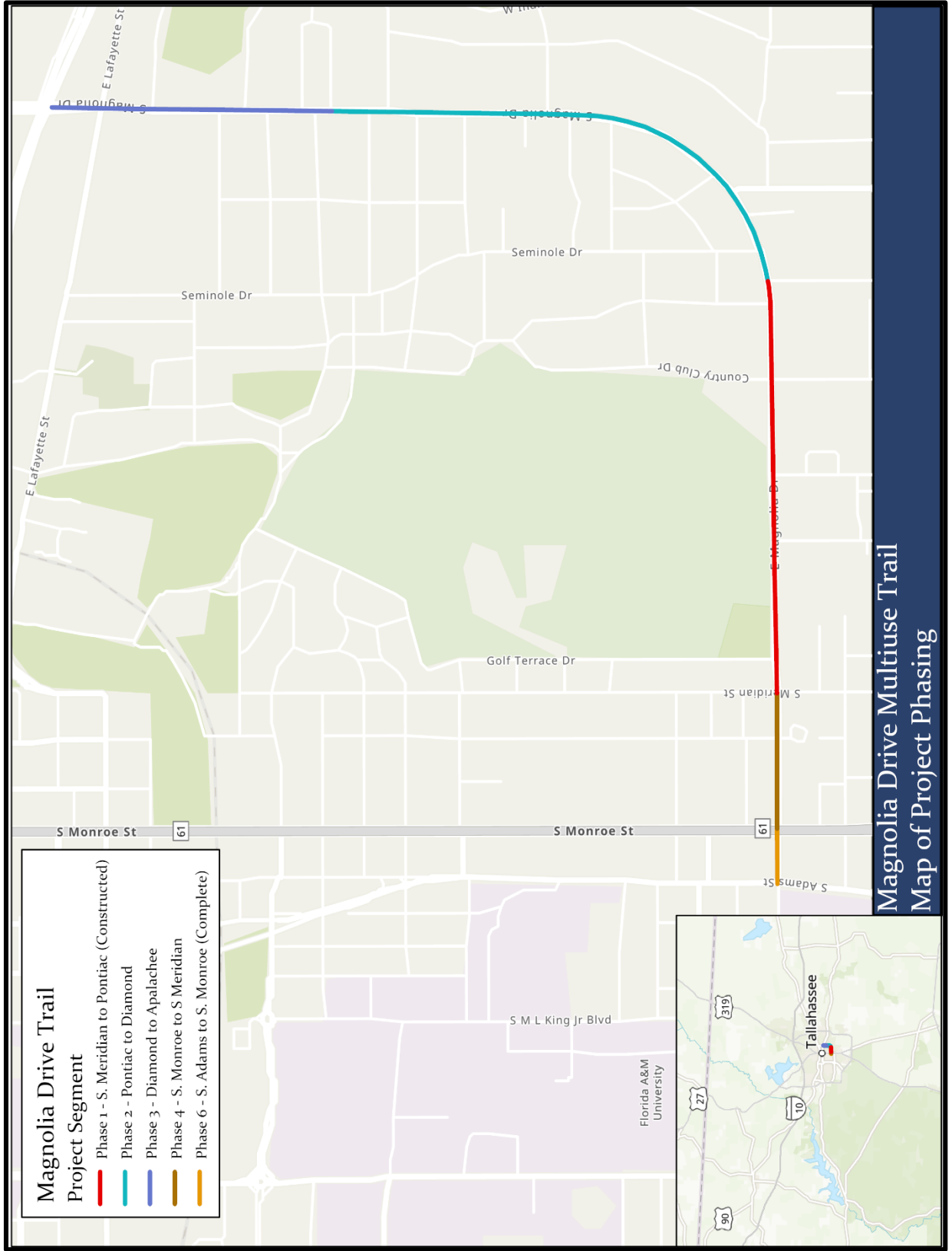
- Design and right-of-way acquisitions are complete on Phase 1 Retrofit and Phase 4 (S. Monroe to S. Meridian). Construction is expected to begin in Fall 2020.
- Design for Phase 2 (Pontiac to Diamond) and Phase 3 (Diamond to Apalachee) is 90% complete. Right-of-way acquisition is ongoing. Construction is currently scheduled to begin in Fall 2021.



# BLUEPRINT



INTERGOVERNMENTAL AGENCY



Magnolia Drive Multiuse Trail  
Map of Project Phasing