



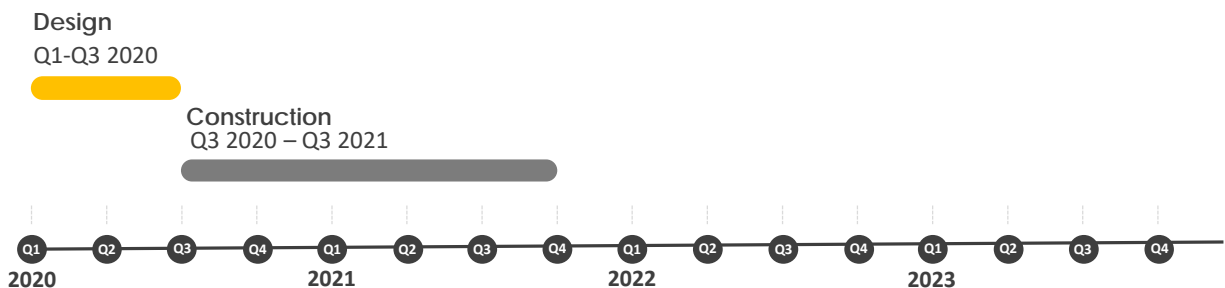
*Capital Cascades Trail Segment 3
 Coal Chute Pond & Skateable Art*

Project Highlights

- Coal Chute Pond provides stormwater retention and treatment for FAMU Way.
- The pond will be enhanced through the inclusion of Skateable Art feature that will be created alongside the pond, and other amenities such as lighting, benches, and landscaping.
- Amenities were refined through a public involvement process conducted in spring 2019, with FAMU, FSU, surrounding neighborhoods and businesses, and 300 citizens submitting their amenities preferences.

Current Status:

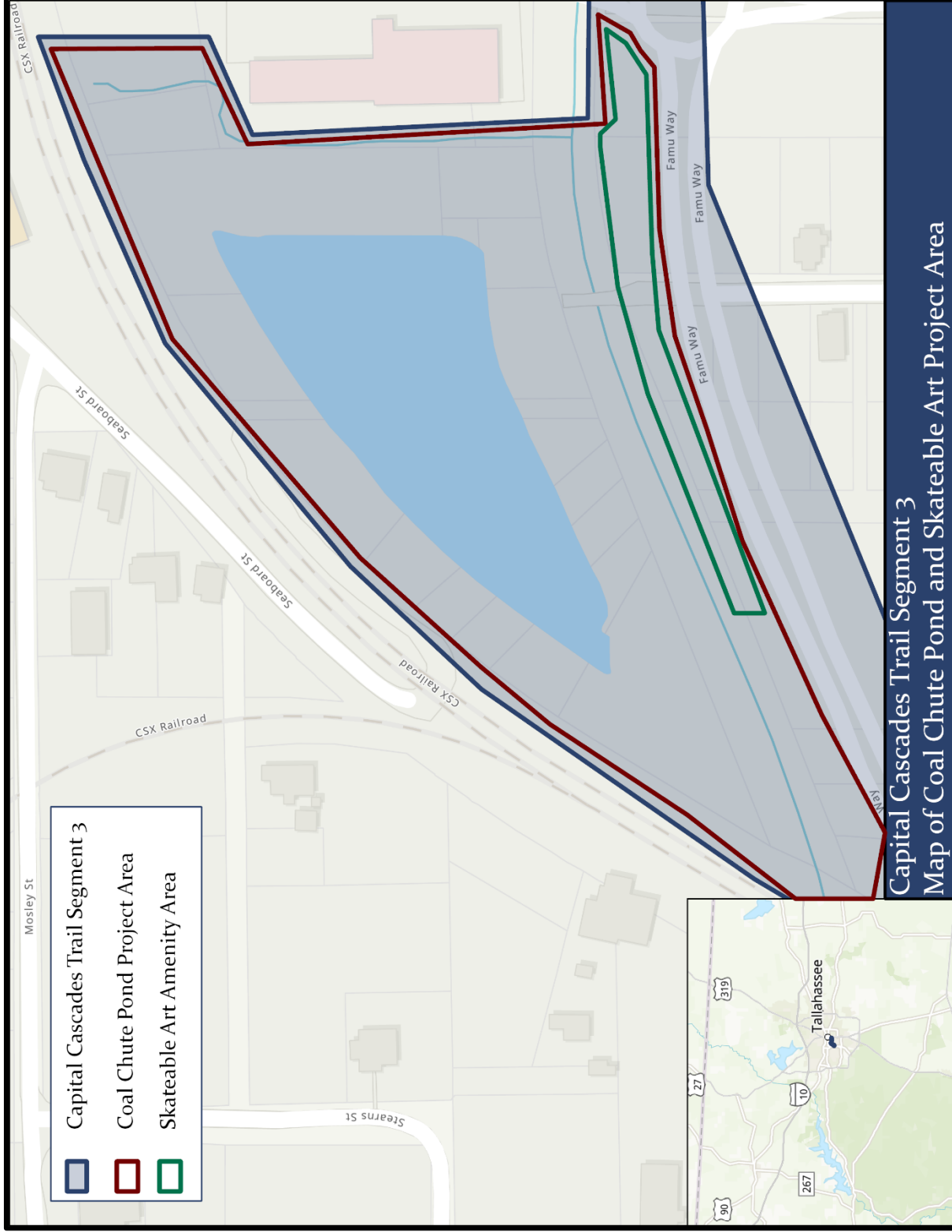
- Blueprint has finalized the design and submitted for a permit for amenities along FAMU Way, including the Coal Chute Pond Area.
- Staff anticipates advertising for construction in late Summer 2020.
- Team Pain Inc. was selected as the design-build team for the Skateable Art amenity and that contract is in development.



BLUEPRINT



INTERGOVERNMENTAL AGENCY



Capital Cascades Trail Segment 3
Map of Coal Chute Pond and Skateable Art Project Area