

Project Website:

blueprintia.org/projects/debbie-lightsey-nature-park/

Staff Contact: Junious Brown

(850) 219-1063

Junious.Brown@Blueprintia.org



*Debbie Lightsey Nature Park
& Capital Circle SW Greenway*

Project Highlights

- The project includes development of:
 - Approximately 6.6 miles of greenway trails in the Capital Circle Southwest (CCSW) corridor.
 - A 113-acre nature park that includes an approximately 1.6 miles of multiuse paths and boardwalks, and a 2.2 mile single-track trail.
 - Boardwalks and overlooks for natural wetland bird-watching.
 - Creation of Golden Aster Trail and Munson Slough connection from Lake Henrietta to CCSW.
- The Capital Circle SW Greenway includes trails and shared use paths for bicyclists, hikers, and other non-motorized users which will connect neighborhoods in south and southwest Tallahassee to several parks and greenways and the Apalachicola National Forest.
- FDOT will be constructing the portion of the Greenway along Capital Circle Southwest.

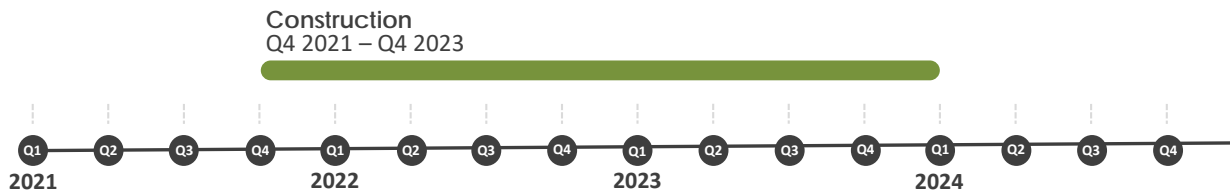
Current Status

- The IA Board approved procuring construction services at their July 15, 2021 meeting for all project components and to procure the single-track trail in order to ensure expertise in trail construction.

Next Steps

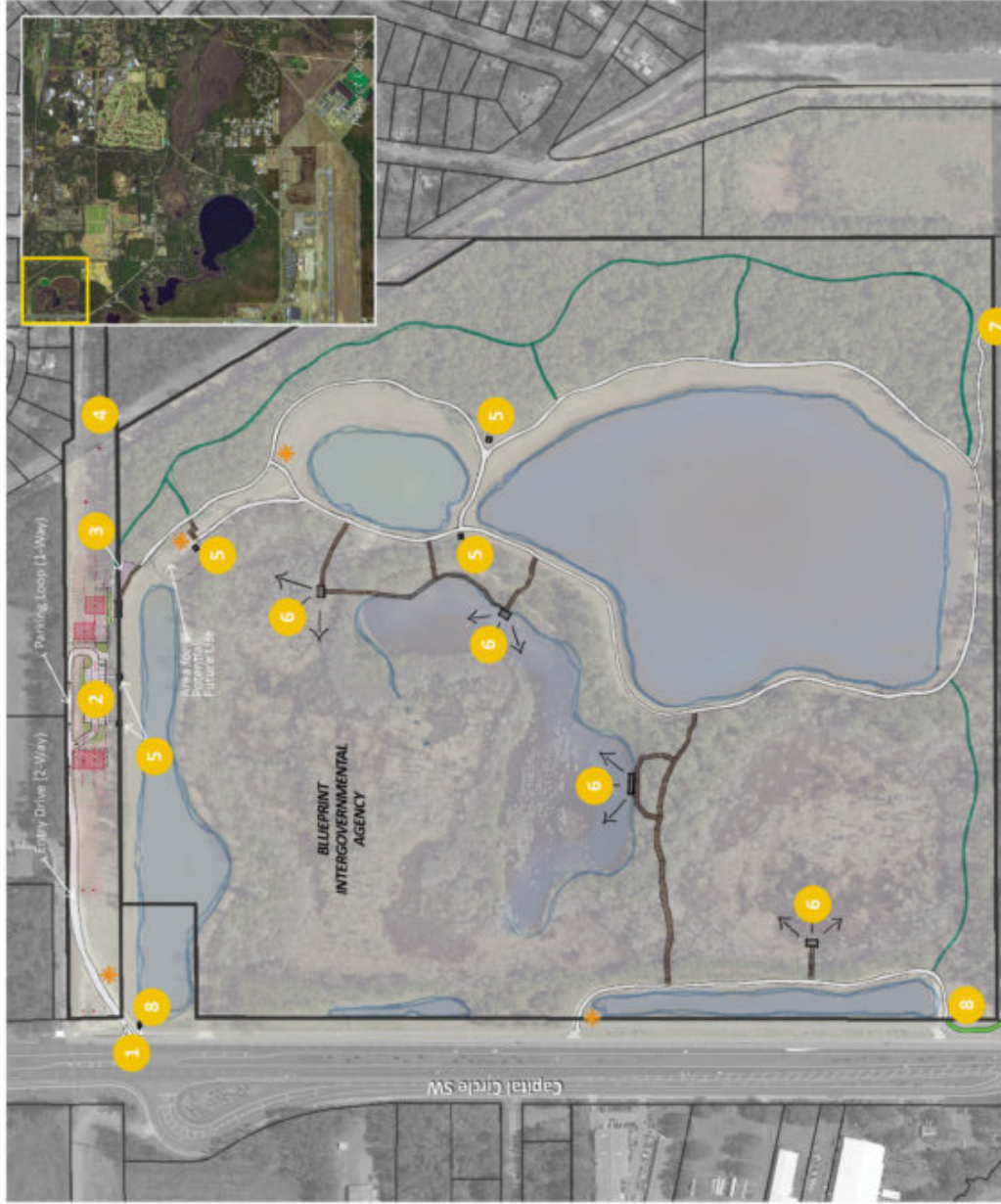
- An RFP for construction of all project elements except the single-track trail is anticipated for Fall 2021.
- Construction services for the single-track trail will be procured upon completion of all other project elements, anticipated to be in Late 2022.
- Total project completion anticipated in Mid to Late 2023.

Timeline



Community Engagement: Public engagement is ongoing through all phases of a project, from concept to construction, programming, and maintenance. Public engagement is two-way communication inclusive of all decision-makers and stakeholders. Each Blueprint project will have a customized Public Engagement Plan that is developed at the start of the project, and outreach activities and techniques will vary from project to project, as each project's outcome and stakeholder community character is unique.

Construction: Construction includes full implementation of final design plans for all elements of the Debbie Lightsey Nature Park and Capital Circle SW Greenways.



- 1 Main Park Entry
- 2 +/- 30 Parking Spaces
- 3 Nature Play Area
- 4 Pedestrian Access (from surrounding neighborhoods)
- 5 Picnic Pavilion
- 6 Overlook Views
- 7 Connection to FSU Rec Fields
- 8 Main Signage

- Eco-Art Opportunity
- Picnic Pavilion
- Main Trail* (10' wide, packed gravel for ADA accessibility)
- Boardwalk (8' wide)
- Rake and Ride bike trails*
- Future Capital Circle SW Multi-Use Trail
- Parcel Lines

* Exact trail paths to be determined on site



NOT TO SCALE