



## Project Highlights

- The Capital Cascades Trail: Segment 3 project is a continuation of the Capital Cascades Trail network, which will provide connectivity and water quality and recreational improvements linking Leon High School in Downtown Tallahassee to Lake Henrietta.
- This project creates a linear park, alongside the newly constructed FAMU Way, stretching from Adams Street to the confluence with the Central Drainage Ditch east of Lake Bradford Road.

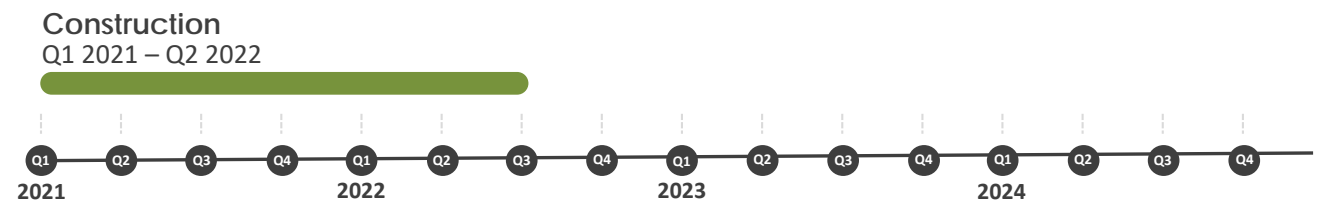
## Current Status

- In addition to the initial \$500,000 Springs Restoration Grant from FDEP for the project's innovative stormwater treatment methods, the project was notified on March 19, 2021 that it was also awarded an additional \$235,000 Non-Point Source Water-Quality Assistance Grant from FDEP.
- Blueprint was noticed on July 22, 2021 that it was deemed eligible for the Recreational Trails Program Grant Program for the new St. Marks Trailhead with a potential grant award of up to \$323,866 from FDEP.

## Next Steps

- Construction of the west stormwater facility and new St. Marks Trailhead is underway and is anticipated to be complete in Summer 2022.
- Construction of the Coal Chute pond amenities, restroom facility, & skateable art is underway in the area around Railroad Square.
- Van Buren Street improvements adjacent to Anita Favors Plaza are ongoing.

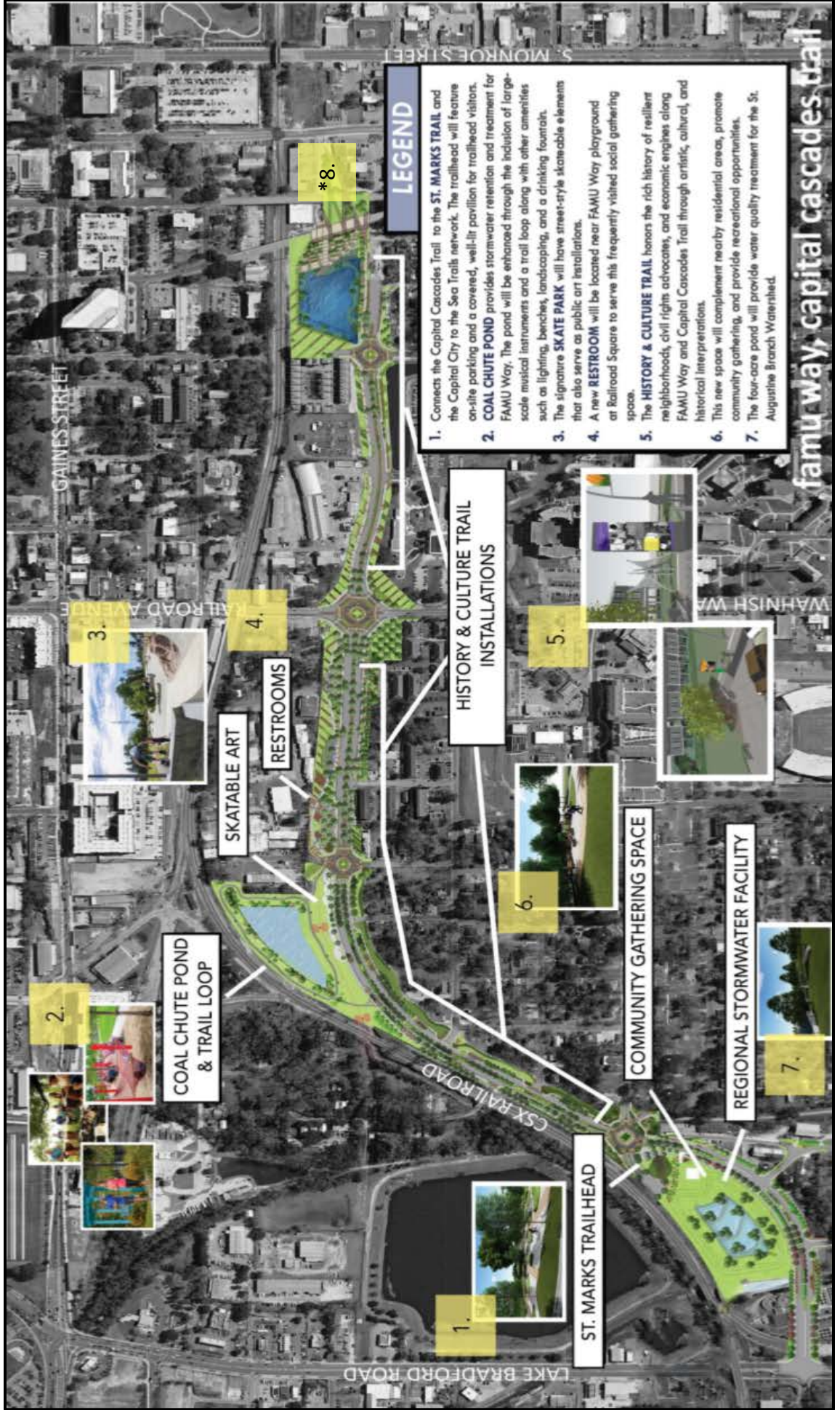
## Timeline



**Community Engagement:** Public engagement is ongoing through all phases of a project, from concept to construction, programming, and maintenance. Public engagement is two-way communication inclusive of all decision-makers and stakeholders. Each Blueprint project will have a customized Public Engagement Plan that is developed at the start of the project, and outreach activities and techniques will vary from project to project, as each project's outcome and stakeholder community character is unique.

**Construction:** Construction work will fully implement the final design plans for Capital Cascades Trail Segment 3.





\*8. Van Buren Street improvements